



BENJAMIN TALLMADGE DISTRICT 2019 SUMMER MERIT BADGE PROGRAM

The merit badge classes will be held this year from 6:45pm – 9:00pm on Tuesday July 23, July 30, and August 6 and August 13 at:

St Philip and James Church

1 Carow Place St James, NY 11780

In the Auditorium located in the basement of the Church

Some Merit Badges have at least 2 dates in parentheses next to it. You MUST show up for all the dates listed to earn the badge. Otherwise, you will be given a partial.

IF YOU ARE 17 AND OF LEGAL AGE TO DRIVE, PLEASE BE ADVISED THAT ACCORDING TO THE BSA RULES AND REGULATIONS, YOU ARE NOT PERMITTED TO DRIVE YOURSELF TO ANY SCOUTING FUNCTION. YOU ARE NOT COVERED UNDER THE BSA INSURANCE.

If you have any questions or concerns please contact the following:

To register please complete the attached registration form by July 19, 2019 and mail to:

Gerri Alfano
10 Regal Ct
St. James, NY 11780
516-805-2226
gacommish@aol.com

For Stem or Nova Questions:
Cliff Locks – Stem/Nova Coordinator
Suffolk County Council
631-338-2114
clifflocks@yahoo.com

Also contact Ms. Alfano with any questions about the program, badges, or pre-requisites. IN ORDER TO THANK THE CHURCH FOR GIVING US SPACE WE ARE MAKING A DONATION TO THEIR FOOD PANTRY. EACH SCOUT IS ASKED TO BRING FOOD ITEMS EACH NIGHT FOR THE FOOD PANTRY.

Benjamin Tallmadge Summer Merit Badge Program

Please Read – All decisions of the advancement committee are final

All Scouts must register by the deadline - July 10, 2018– classes are formed based on the numbers registered. NO WALK-INS.

In order to be allowed to stay and do the merit badge registered for all scouts must have the following. If something is missing, they will be sent home. No exceptions.

- 1 Have the Merit Badge Pamphlet (available at the scout shop)
- 2 Have the Merit Badge Worksheet (available at www.meritbadge.org)
- 3 Have the merit badge pre-requisites and worksheet completed
- 4 Be in full uniform, scout pants or shorts, class A or B shirt
- 5 Have a writing utensil and paper
- 6 **Have the blue card for the badge filled out and signed by your scoutmaster**

Please have your parent walk you in and drop off the emergency contact sheet at the parent drop off table

The scout will go to another table and sign in for the week. Parents should not accompany the scout to the registration table.

Parents: please remember, the scout is doing the badge – he should have his paperwork in order, sign himself in and ask any questions pertaining to the badge and the requirements.

All communication regarding the badges either by phone, email, or at the event must be done by the scout.

The church will have water for sale -- \$1.00 bottle –Scouts should arrive at 6:45 and parents should come to pick up promptly at 8:45

Any questions or concerns please contact

Gerri Alfano - 516-805-2226 gacommish@aol.com

REGISTRATION FORM 2019 SUMMER MERIT BADGE PROGRAM
BENJAMIN TALLMADGE DISTRICT, SUFFOLK COUNTY COUNCIL

Date - _____
Scout Name - _____
Address - _____ Apt # _____
Town - _____ Zip _____
Telephone No. - _____ Email - _____
Troop # - _____ Are you going to Summer Camp _____
Troop Location - _____
Age - _____ Current Rank - _____

Please check the merit badge you wish to register for and circle the dates

please check the badges you are registering for and circle the dates you want to attend.

_____ American Business	7/23, 7/30		
_____ American Heritage	8/6, 8/13		
* _____ Citizenship in the Community	7/23, 7/30	or	8/6, 8/13
* _____ Citizenship in the Nation	7/23, 7/30	or	8/6, 8/13
* _____ Citizenship in the World	7/23, 7/30	or	8/6, 8/13
_____ Dog Care	7/23		
* _____ Family Life ***	8/6, 8/13		
_____ Fire Safety	7/23, 7/30		
_____ Game Design	7/23, 7/30		
_____ Insect Study	7/30		
_____ Model Design and Building	7/23, 7/30		
* _____ Personal Management ***	7/23, 7/30		
_____ Public Speaking	8/6, 8/13		
_____ Robotics	7/23, 7/30		
_____ Scouting Heritage	8/6		
_____ Signs, Signals and Codes	7/23, 7/30		
_____ Sustainability	8/6, 8/13		
_____ Traffic Safety	8/6		
_____ Start Your Engines Nova Award	7/23, 7/30, 8/6, 8/13 - you must register for your session		

***** - Both these are three month badges – you must have a blue card signed by the scoutmaster 3 months prior to the session date. This is very important. Also, any requirement stating discuss with counselor the scout must be prepared to discuss.**

PLEASE NOTE – SCOUTS, NOT PARENTS, SHOULD CALL OR EMAIL ANY QUESTIONS THAT THEY HAVE
ALL FORMS MUST BE POSTMARKED BY JULY 9, 2019, NO EXCEPTIONS. MAIL COMPLETED FORMS TO

Gerri Alfano

10 Regal Ct

St. James, NY 11780

516-805-2226

gacommish@aol.com

REMEMBER – CLASSES HAVE LIMITS, REGISTER EARLY TO SECURE THE DATES OF YOUR CHOICE

Pre-Requisites

2019 Summer Merit Badge Program

Benjamin Tallmadge District

American Business	1 b, c	2	3	4	5	6			
American Heritage	1	2	3	4	5	6			
Citizenship in the Community	2 a, b	3 a,b		4	5	7 a, b,c		8	
Citizenship in the World	4a,b,c (complete 2)			7 a, b, c, d, e(complete 2)					
Citizenship in the Nation	2a, b, c, d(complete 2)				3	5	6	7	8
Dog Care	4,	5,	8,	10					
Fire Safety	1b	4a,b	5	6all	11				
Family Life	1	2	3	4	5				
Game Design	5a, b, c, d		6a	7a					
Insect Study	4,	5,	6,	9,	10,	11,	13		

Model Design

Prerequisites:

1. Know the safety requirements in item 1. Have a totin chip and bring safety glasses
3. If you wish to start on Item 4 before the 1st meeting, email me the items listed in Item 3 at ajblb@earthlink.net before you start.
5. Think of some ideas for your fantasy spacecraft.

Personal Management	1a,b,c	2a,b	5	8a, b, c, d	9a,b,c,d,e
Public Speaking	1,	2,	3,	4,	5

Robotics Review the merit badge requirements:

<https://meritbadge.org/wiki/index.php/Robotics>

Do 2a,2c, 6b and 7. Come with an idea for 4a, 4b, 4d option 2. Base it on a kit or parts you have at home. The idea must include 2 degrees of freedom (ie 2 motors or actuators.). It must demonstrate motion, sensor feedback, and programming. Before week 2, each scout will build a robot to satisfy 4c. They should bring their ideas, with parts, to week 1 for discussion and building. Toys like Lego Mindstorm are ideal. Other suggestions are the following kits:

Amazon: \$69

https://www.amazon.com/Makeblock-Mechanical-Entry-Level-Programming-Creativity/dp/B00SK5RUQY/ref=sr_1_21?crd=2Z1Z280F4UXTX&keywords=robotics+kits+for+kids+10+and+up&qid=1552585165&s=toys-and-games&prefix=robotics+kits+for+kids%2Ctoys-and-games%2C280&sr=1-21

Scout Store: \$159

<https://www.scoutshop.org/catalog/product/view/id/2974>

We will complete 4a, 4b, 4d option 2 during week 1. In the 2nd week, the scouts will complete 4d option 1 (if applicable), 5a and 5b.

Scouting Heritage	2,	4,	5,	6,	8	
Signs, Signals and Codes	1, 3, 5, 6, 7	paper signed by unit leader, 8, 9, 10				
Sustainability	1	food a	community a	water a	energy a	stuff a
				B and c for all	4	6
Traffic Safety	1a,b,c,d	5 – complete 1				

Please note – any 3 month badges must have a signed blue card dated 3 months prior to the badge start date. Also for any requirement stating discuss with counselor the scout must be prepared to discuss the topics with the counselor to complete the badge.

2019 Summer Merit Badge Program
Benjamin Tallmadge District
Emergency Contact Information

Date - _____

Scout Name - _____

Parent/Guardian Name - _____

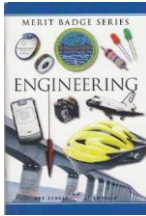
Who can we contact in case of an emergency? Please give the cell number of someone who we can contact while classes are in session.

Name - _____

Cell Phone - _____

When dropping the scout off please come into the auditorium and drop off this completed form at the appropriate table.

When you are picking up the scout please arrive by 8:45pm and come into the auditorium to pick up the scout. An adult must come to pick up the scout. Walkers need a note from a parent allowing them to leave on their own. All Scouts must be released to parents. They cannot leave the basement without an adult.



Earn your Engineering or Electronics Merit Badge and Nova Award Emblem Together



Engineering Merit Badge Pamphlet online link:

<https://docs.google.com/file/d/0Bxgvwk8HKLIHdGkxbjFDR1d4RUk/edit?pli=1>

Whoosh!

(The Whoosh - Nova Award requirements are listed below)

This module is designed to help you explore how engineering affects your life each day.

1. Choose A or B or C and complete ALL the requirements.
 - A. Watch about three hours total of engineering-related shows or documentaries that involve motion or motion-inspired technology. Then do the following:
 1. Make a list of at least two questions or ideas from each show.
 2. Discuss two of the questions or ideas with your counselor.

Some examples include—but are not limited to—shows found on PBS ("NOVA"), Discovery Channel, Science Channel, National Geographic Channel, TED Talks (online videos), and the History Channel. You may choose to watch a live performance or movie at a planetarium or science museum instead of watching a media production. You may watch online productions with your counselor's approval and under your parent's supervision. One example is the NOVA Lever an Obelisk page on ancient Egypt and the use of levers, available at www.pbs.org/wgbh/nova/egypt/raising/lever.html.

Examples of magazines include—but are not limited to—Odyssey, Popular Mechanics, Popular Science, Science Illustrated, Discover, Air & Space, Popular Astronomy, Astronomy, Science News, Sky & Telescope, Natural History, Robot, Servo, Nuts and Volts, and Scientific American.

- B. Read (about three hours total) about motion or motion-inspired technology. Then do the following:
 1. Make a list of at least two questions or ideas from each article.
 2. Discuss two of the questions or ideas with your counselor.

- C. Do a combination of reading and watching (about three hours total). Then do the following:
1. Make a list of at least two questions or ideas from each article or show.
 2. Discuss two of the questions or ideas with your counselor.
2. Choose ONE merit badge from the following list. (Choose one you have not already used for another Nova award.) After completion, discuss with your counselor how the merit badge you earned uses engineering.

Archery	Inventing
Aviation	Model Design and Building
Composite Materials	Railroading
Drafting	Rifle Shooting
Electronics	Robotics
Engineering	Shotgun Shooting

3. Do ALL of the following:
- A. Make a list or drawing of the six simple machines.
 - B. Be able to tell your counselor the name of each machine and how each machine works.

Helpful Link

"Six Simple Machines": ConstructionKnowledge.net

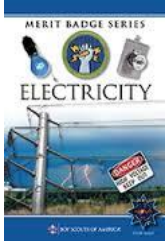
Website:

http://www.constructionknowledge.net/general_technical_knowledge/general_tech_basic_six_simple_machines.php 

- C. Discuss the following with your counselor:
1. The simple machines that were involved with the motion in your chosen merit badge (Hint: Look at the moving parts of an engine to find simple machines.)
 2. The energy source causing the motion for the subject of your merit badge
 3. What you learned about motion from earning your merit badge
4. Choose A or B and complete ALL the requirements.
- A. Visit an amusement park. Then discuss the following with your counselor:
 1. The simple machines present in at least two of the rides
 2. The forces involved in the motion of any two rides
 - B. Visit a playground. Then discuss the following with your counselor:
 1. The simple machines present in the playground equipment
 2. The forces involved in the motion of any two playground fixtures
5. Do the following:
- A. On your own, design one of the following and include a drawing or sketch: an amusement park ride OR a playground fixture OR a method of transportation.
 - B. Discuss with your counselor:
 1. The simple machines present in your design
 2. The energy source powering the motion of your creation



BOY SCOUTS OF AMERICA®



Earn your Electricity Merit Badge and Nova Award Emblem Together



Electricity Merit Badge Pamphlet online link:

<https://docs.google.com/file/d/0Bxgvwk8HKLIHOVkxRzY0VzB4aWM/edit?pli=1>

Start Your Engines!

(The Start Your Engines - Nova Award requirements are listed below)

This module is designed to help you explore how technology affects your life each day.

1. Choose A or B or C and complete ALL the requirements.
 - A. Watch about three hours total of technology-related shows or documentaries that involves transportation or transportation technology. Then do the following:
 1. Make a list of at least two questions or ideas from each show.
 2. Discuss two of the questions or ideas with your counselor.

Some examples include—but are not limited to—shows found on PBS ("NOVA"), Discovery Channel, Science Channel, National Geographic Channel, TED Talks (online videos), and the History Channel. You may choose to watch a live performance or movie at a planetarium or science museum instead of watching a media production. You may watch online productions with your counselor's approval and under your parent's supervision.

- B. Read (about three hours total) about transportation or transportation technology. Then do the following:
 1. Make a list of at least two questions or ideas from each article.
 2. Discuss two of the questions or ideas with your counselor.

Examples of magazines include—but are not limited to—Odyssey, Popular Mechanics, Popular Science, Science Illustrated, Discover, Air & Space, Popular Astronomy, Astronomy, Science News, Sky & Telescope, Natural History, Robot, Servo, Nuts and Volts, and Scientific American.

- C. Do a combination of reading and watching (about three hours total). Then do the following:
 1. Make a list of at least two questions or ideas from each article or show.

2. Discuss two of the questions or ideas with your counselor.
2. Complete ONE merit badge from the following list. (Choose one that you have not already used toward another Nova award.) After completion, discuss with your counselor how the merit badge you earned uses technology.

Automotive Maintenance	Farm Mechanics
Aviation	Motorboating
Canoeing	Nuclear Science
Cycling	Railroading
Drafting	Small - Boat Sailing
Electricity	Space Exploration
Energy	Truck Transportation

3. Do ALL of the following.
- A. Using the requirements from the above list of merit badges:
 - 1. Tell your counselor the energy source(s) used in these merit badges.
 - 2. Discuss the pros and cons of each energy source with your counselor.
 - B. Make a list of sources of energy that may be possible to use in transportation.
 - C. With your counselor:
 - 1. Discuss alternative sources of energy.
 - 2. Discuss the pros and cons of using alternative energy sources.
4. Design and build a working model vehicle (not from a kit).
- A. Make drawings and specifications of your model vehicle before you begin to build.
 - B. Include one of the following energy sources to power your vehicle (do not use gasoline or other combustible fuel source): solar power, wind power, or battery power.
 - C. Test your model. Then answer the following questions:
 - 1. How well did it perform?
 - 2. Did it move as well as you thought it would?
 - 3. Did you encounter problems? How can these problems be corrected?
 - D. Discuss with your counselor:
 - 1. Any difficulties you encountered in designing and building your model
 - 2. Why you chose a particular energy source
 - 3. Whether your model met your specifications
 - 4. How you would modify your design to make it better